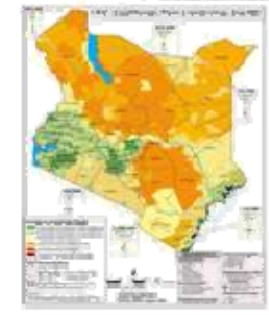
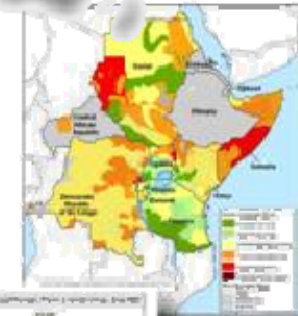


IPC

IPC



Integrated Food Security Phase Classification



The IPC

Global Partnership

Integrated Food Security Phase Classification (IPC)
Global Partners



IPC



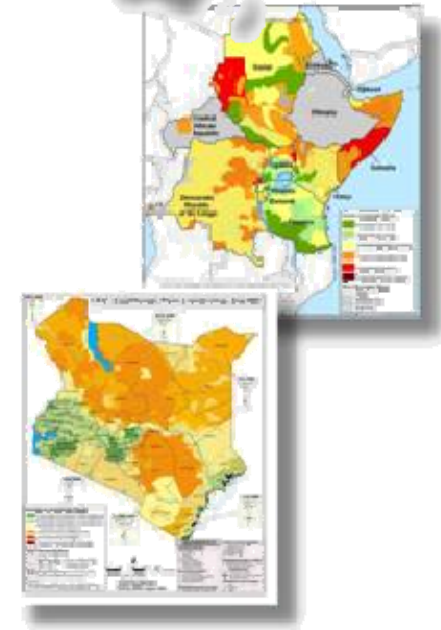
Integrated Food Security Phase Classification



The consequences of a lack of partnership

Different stakeholders, from governments, UN agencies and NGOs, produce their own conflicting analysis and recommendations for response

Recommendations and analysis are influenced by stakeholders political interests, mandates, capacities or resources available



IPC

IPC

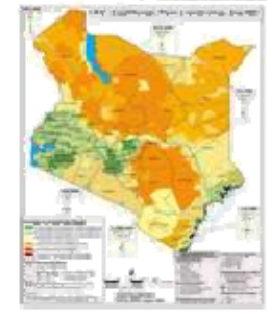
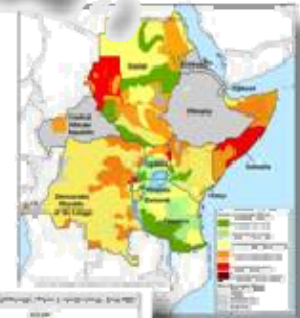


Integrated Food Security Phase Classification



The advantages of partnership

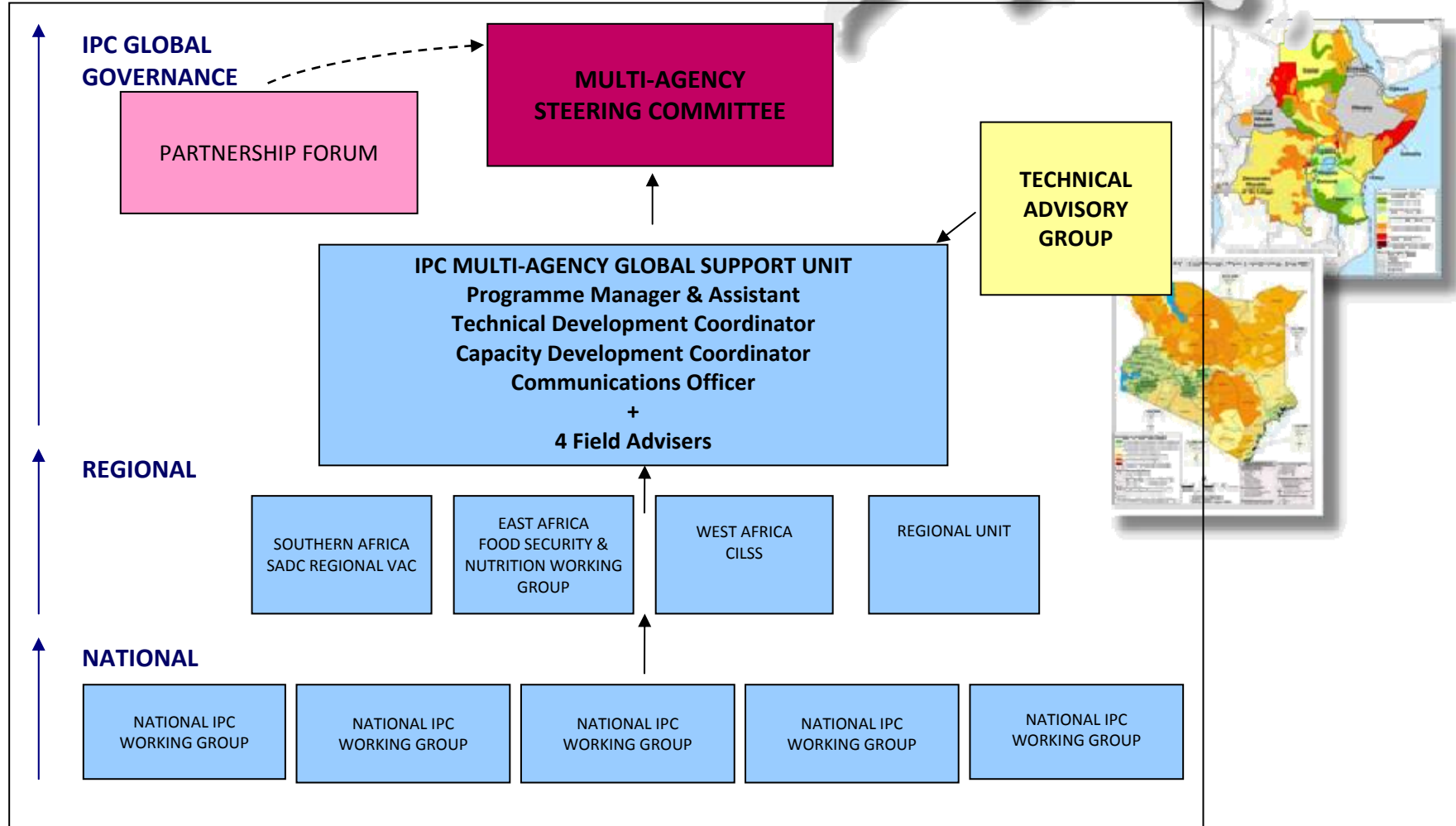
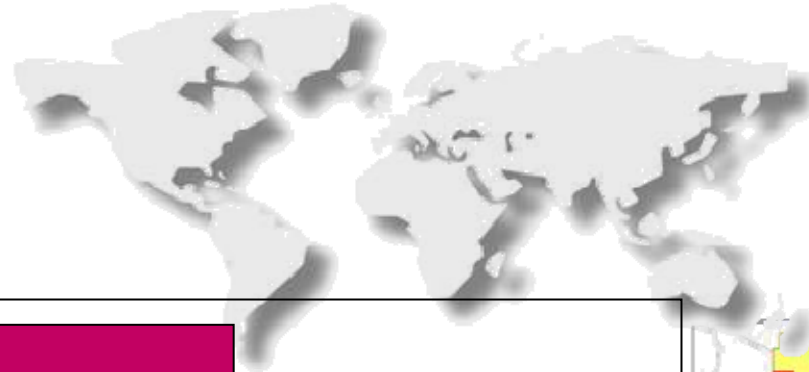
- Helps bridge the divide between humanitarian and development approaches
- Increases the confidence of decision makers in the validity of the analysis
- Increases transparency and accountability of technical specialists
- Limits political, institutional and other biases
- Leads to more appropriate and effective policies and interventions



IPC



Integrated Food Security Phase Classification



IPC

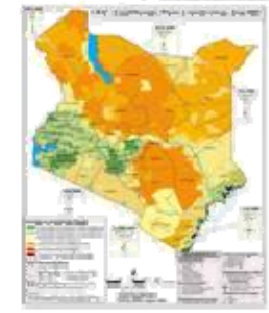
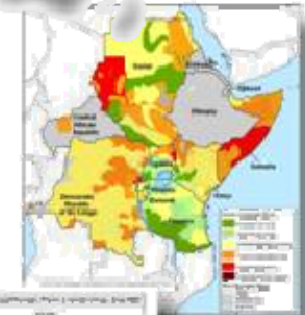


Integrated Food Security Phase Classification



Key institutional guiding principles

- The implementation of the IPC should be a consensus process facilitated by a broad interagency working group, including government and key constituencies
- All efforts should be made to engage and build capacity of government and promote ownership and strengthen the institutional process.
- IPC process should comprise a mechanism to build an institutional commitment from government



IPC

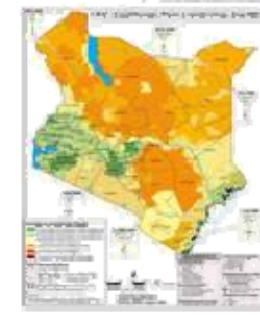
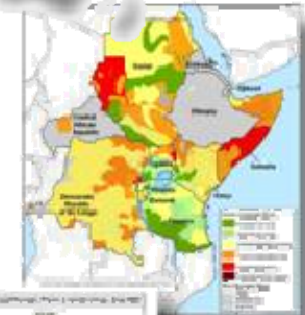


Integrated Food Security Phase Classification



Key institutional guiding principles

- IPC analysis should be done with technical neutrality through having a broad membership of the interagency group and through a transparent process of consensus building and ensuring group members participate in their technical capacity.
- The leadership of IPC processes in countries should be decided by the interagency group in-country based on both comparative advantages and responsibilities (e.g. Government leadership).



IPC

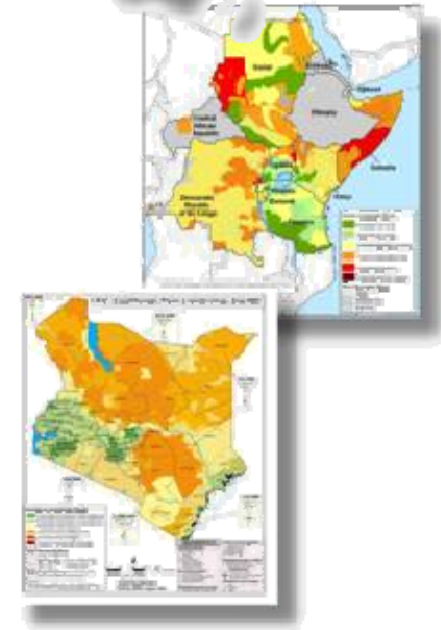


Integrated Food Security Phase Classification



Some key challenges of partnership

- Institutional mandates and competition for resources
- Agency institutionalisation
- Balancing partnership and efficiency
- Lack of donor partnership

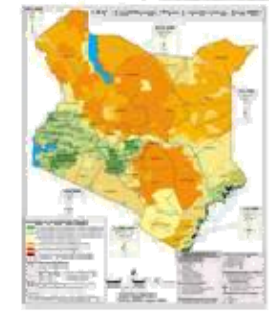
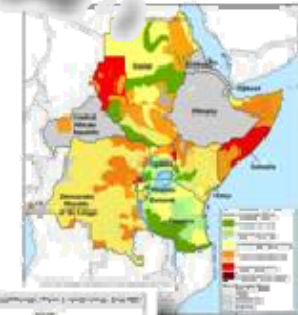


IPC

IPC



Integrated Food Security Phase Classification



The IPC

Global Partnership

Integrated Food Security Phase Classification (IPC)
Global Partners

